

WESTERN NEWFOUNDLAND

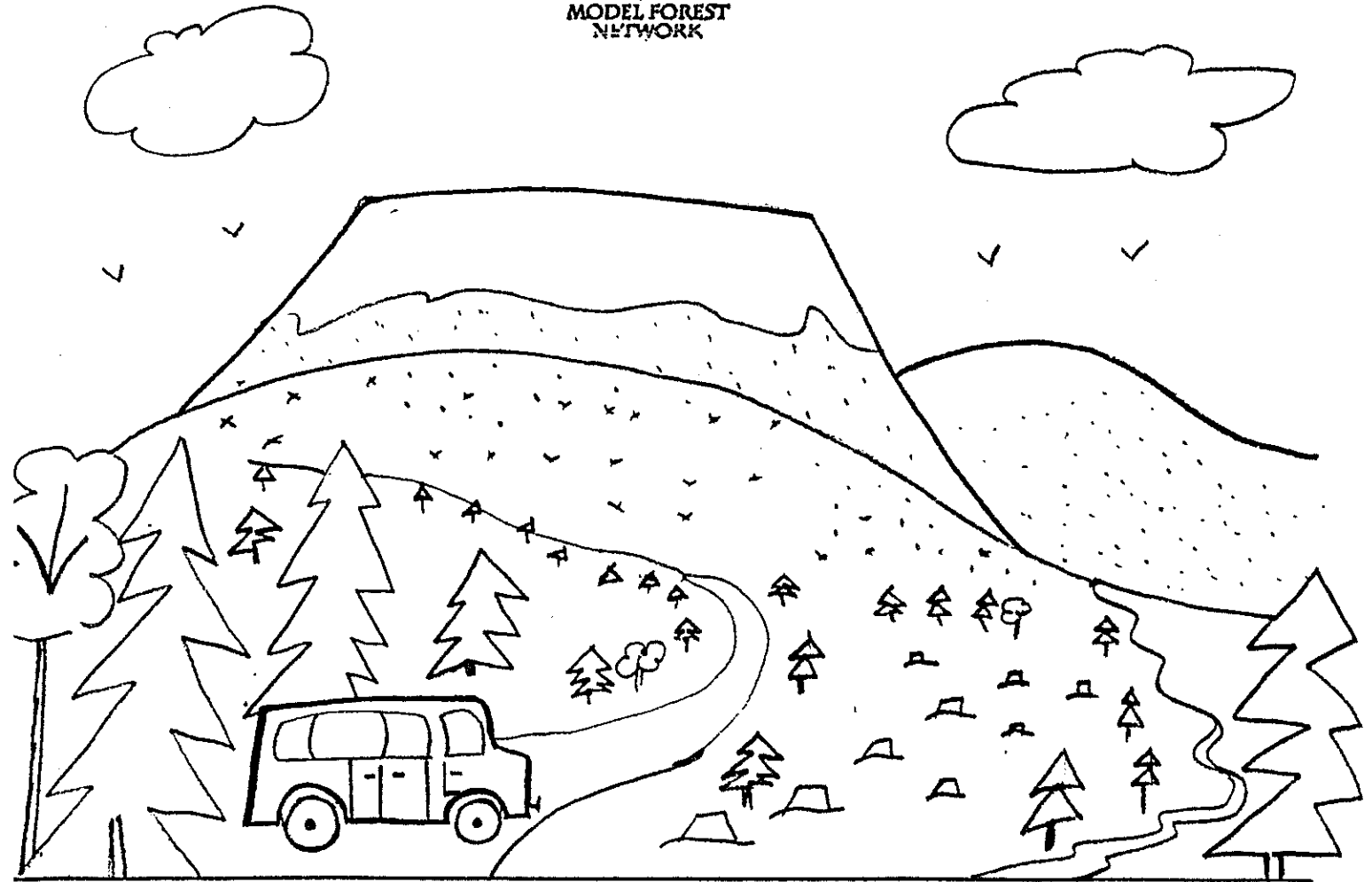
MODEL FOREST

BUS TOUR GUIDE

WESTERN
NEWFOUNDLAND



MODEL FOREST
NETWORK



*Western
Newfoundland
Model
Forest*

*A collaborative effort in integrated resource
management and sustainable development between:*

*Corner Brook Pulp and Paper Ltd.
Newfoundland Forest Service
Wildlife Division
Abitibi-Price Inc.
City of Corner Brook
Humber Environment Action Group
Centre for Forestry and Environmental Studies*

WESTERN NEWFOUNDLAND MODEL FOREST

This model forest with its rolling hills has Corner Brook situated in its geographic centre. The weather and soil are suited for good forest and vegetative growth. Half of the land is good for commercial forestry while the remainder contains scrub, rock, barrens, water and development. This forest helps to keep the Corner Brook and Stephenville papermills working with 900 papermakers and 1650 forest workers.

The 280 km of paved Trans Canada Highway and secondary roads and 550 km of gravel forest access roads and 100 km of abandoned CNR railbed provide an excellent transport base for a variety of commercial, outdoor and wilderness activities for much of the year. There are protected areas such as the Pine Marten Study Area and Provincial Parks.

The forest is a balsam fir type with balsam fir being the most abundant tree and included are smaller amounts of white spruce, black spruce, white birch, yellow birch, red maple, mountain ash, black ash and juniper(tamarack). Many species of plants, mushrooms and insects make up the remaining land coverage. From 1977 to 1984 the spruce budworm damaged much balsam fir as did the hemlock looper from 1986 to 1987 which

resulted in large salvage operations. The wildlife includes snowshoe hare, pine marten, moose, caribou, black bear, red fox, coyote, lynx, otter, mink, beaver, muskrat, short tailed weasel, squirrel, chipmunk, deer mice, meadow voles, masked shrews and many types of birds, from song birds and woodpeckers to hawks and owls and ducks. Atlantic salmon and brook trout are the most important recreational fish.

People and animals use the forest resources to build homes and live. The first sawmill started up in Corner Brook in 1864 and was followed by a paper mill in 1925. On the forest land people work, have fun, get educated, enjoy scenery and get drinking water and food. The forest experience helps people to live and look after themselves.

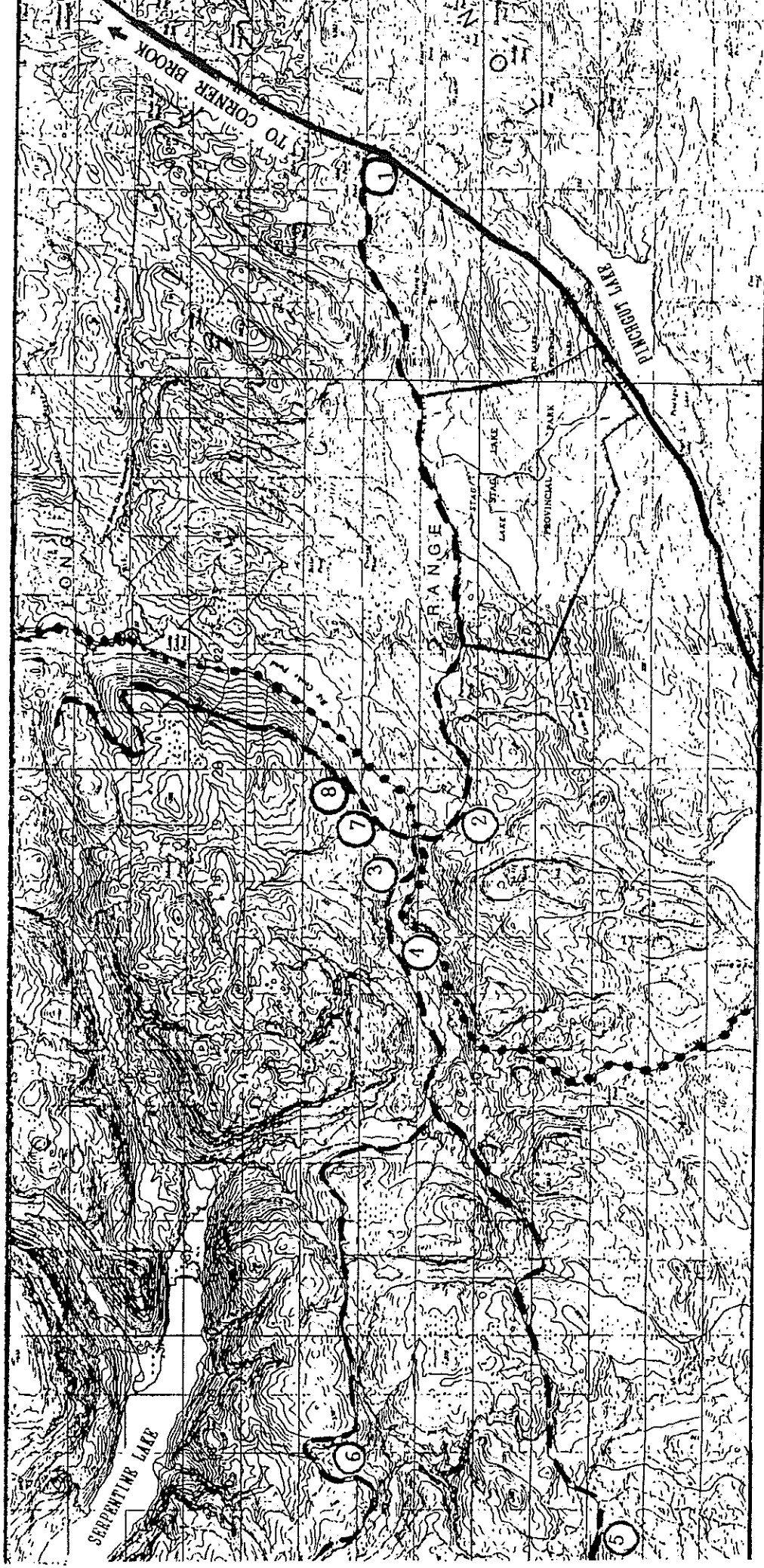




RÉSEAU DE FORÊTS MODÈLES

Western Newfoundland Model Forest

BUS TOUR STOPS

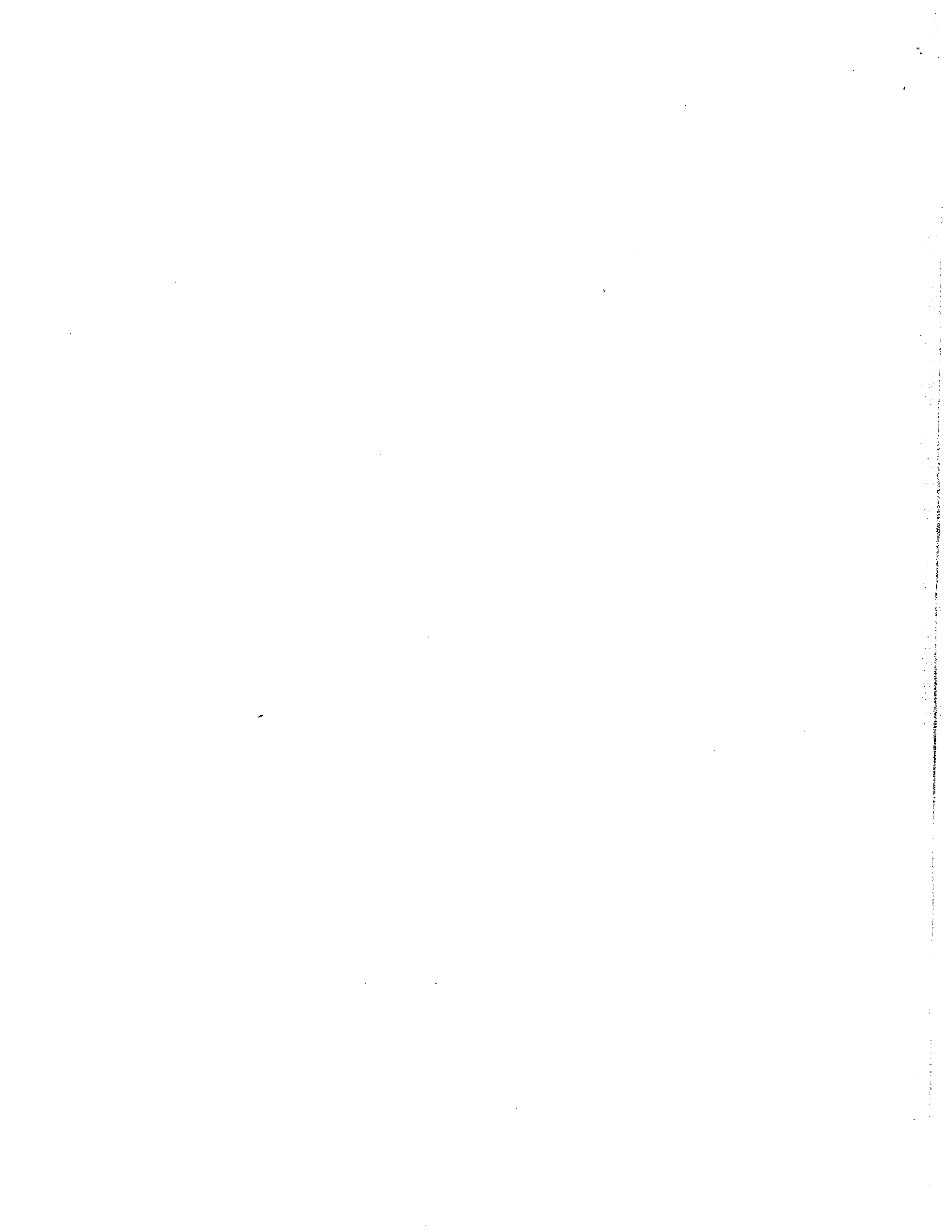


LEGEND

•••••	CNR RAILBED	—	LOGGERS SCHOOL ROAD	○	BUS STOP
		—	TRANS CANADA HIGHWAY		
					SCALE 1:100,000



TRUE NORTH



TOUR STOPS

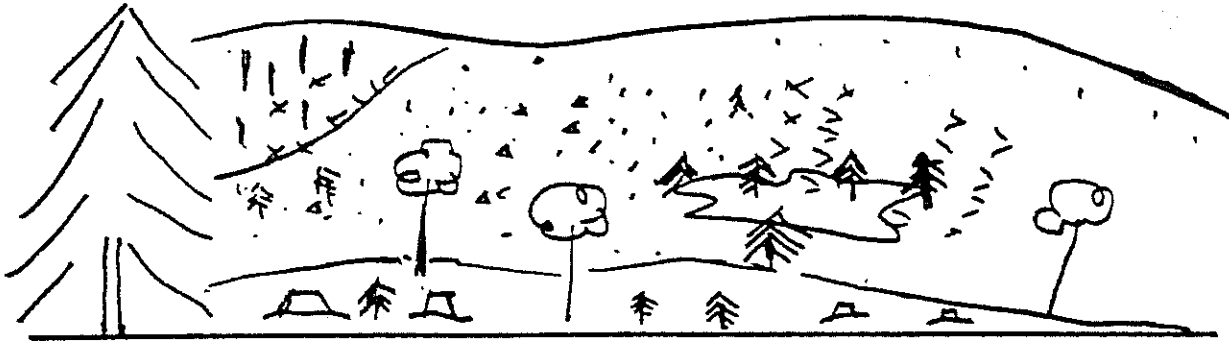
1: THE BALSAM FIR ECOLOGY SITE



This area is located at the start the Loggers School Road near the Trans-Canada Highway. It has a sample of a 75 year, 90 year, and 45 year aged stand of the fern-moss balsam fir forest type. All three stands regenerated naturally but only the 45 year stand was cut and is now called second growth. The dominant trees are balsam fir, white spruce and white birch. The forest floor is covered in ferns, mosses and herbs.

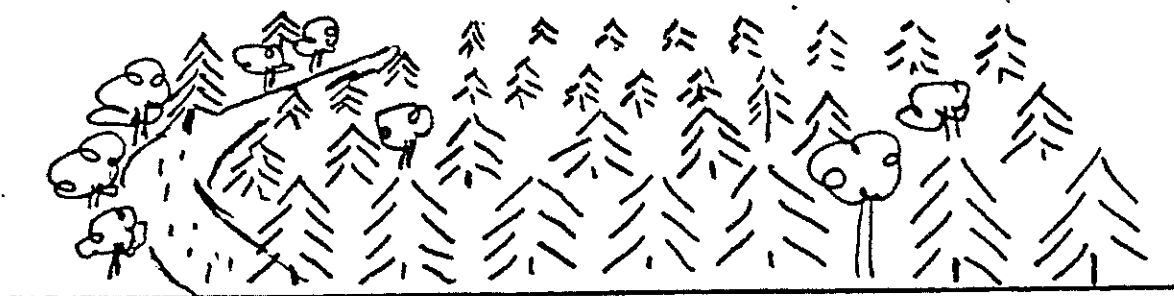
Robins, woodpeckers, squirrels and moose like to visit here. As well, there is evidence of the 10,000 year old glacier meltdown.

2: HEMLOCK LOOPER CUTOVER SITE



This cutover dates back to 1988. In 1986-87 the balsam fir needles were eaten by hemlock looper caterpillars. When there is a large mass of them they will even eat the balsam fir seedlings. To save the fibre in the dead trees the papermill salvage cut. The site is greening up naturally but there are fewer than normal balsam fir seedlings. Moose, birds and insects live here.

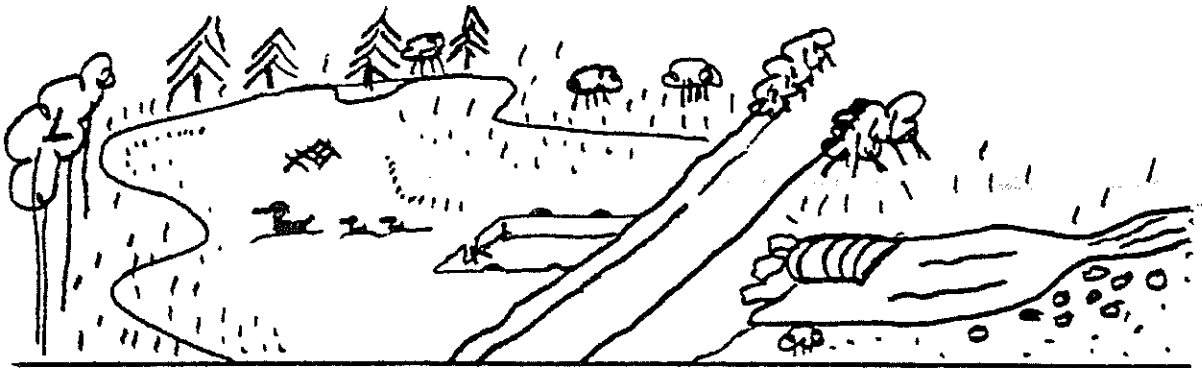
3: SILVICULTURAL MANAGEMENT SITE



This balsam fir forest is rich in ferns, mosses and shrubs. This site was logged around 1964. Fourteen years later in 1978 the thickly growing balsam fir saplings were thinned from approximately 50,000 trees per hectare to about

2,000 per hectare. Now 15 years later these trees have the same trunk diameters as the trees in the 45 year stand. This is a typical and desirable result so that healthy trees can be harvested earlier. The scattered birches, mountain maple, squash berry and mountain ash add to the food supply for moose. Ruffed grouse, white throated sparrows, red foxes and other animals and birds also make this location their home.

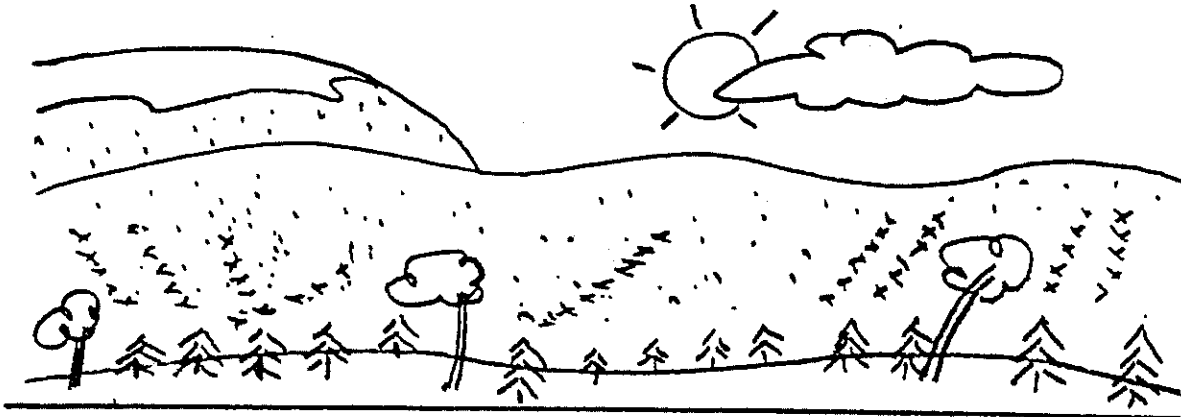
4: THE DUCK POND



This marsh and pond was established as a wetland in 1983. Through the cooperation of the then Bowater Co. and Ducks Unlimited a dam was built and the water level was raised and stabilized. Thus a suitable habitat of 65 acres was created for dabbling duck nesting and brooding such as black duck, pintail and wigeon. The trout fishing is good. Moose have been seen here and there is a beaver lodge in the pond.

Nfld's provincial tree and flower, the black spruce and pitcher plant grow here as well. It is a nice spot for a boil up

5: SPRUCE BUDWORM SALVAGE SITE



The spruce budworm population explosion here in the late 1970's made it necessary to salvage cut this area. The caterpillar damaged and destroyed many acres of valuable balsam fir trees but it does not feed on seedlings. Therefore the balsam fir grew back thick and from 1986 to 1990 a thinning program was conducted to maximize growth for pulpwood. Robins, Canada jays, moose and many other animals and birds have their young here.

6: WINTER ROAD

A typical logging road follows a winding valley that ends at Serpentine Lake. The surrounding winter cutover dates from 1978 and now 15 years later workers are thinning the thickly growing balsam fir trees. Black bears and moose roam here. People can enjoy nature and take in the spectacular view.

7: FOUR IN ONE SITE



These four fern, moss and balsam fir forests display an eye catching difference in ages.

The first site was a white birch stand that was cut in 1982 and used for biomass or fuel. Now it has reverted to a sapling or a 10 year old balsam fir forest. Railway fires especially from the steam locomotive days would result in the balsam fir forest being totally killed as the fir seed, seedlings and trees die. Then the ground is free to reseed to a new species as white birch. The surrounding balsam fir tree seeds blew in and started the new forest that is christmas tree height now and may be considered for thinning later.

The second area was thinned in 1983 after it was logged in about 1962. These trees are robust, healthy, bushy and about 30 years old.

The third and adjoining balsam fir site was cut out back in 1947 and left to regrow on its own, as that was the management decision then. This 45 year wood will be ready for harvest in about 25 years. The beauty of this is that the

thinned site will be 55 years old and ready for harvest as well. Therefore both stands will be cut together and the wood supply evened out.

The fourth property holds 70 year old balsam fir that were damaged by a spruce budworm infestation in the nineteen eighties. It has many dead trees and poorly growing survivors as seen by the few thin branches in the crowns or tree tops. It is interesting to see how well the little seedlings of balsam fir are growing on the forest floor as more and more light is let in by the decreasing number of old trees.

8: WALKING TRAIL



This half a kilometre hiking trail passes through a second growth forest that grew on a 1947 cutover. These good growing balsam fir, white birch, white spruce, ferns, mosses, herbs and shrubs are growing on a rich, drained site. There are people studying and doing research here. The trail is shared by ATVs, moose and bear. Birch 'blights' or small cutovers occur throughout the area.

Nearby a salvage cut was made in 1987 due to a hemlock looper population explosion that affected even this stand but it survived since it was treated with an insecticide.

T H A N K Y O U

It has been a pleasure to guide you through some of these forest sites. You are welcome to return and follow all the roads and trails for your own exploring and enjoyment.

We appreciate your comments and will use your suggestions in improving our bus tour.

STAN PIEDA
PUBLIC AWARENESS PROJECT
WESTERN NEWFOUNDLAND MODEL FOREST

